

## Booking your visit

Booking a Wood of Life workshop for your school is easy. Just email: [tomroche@justforests.org](mailto:tomroche@justforests.org) with your name, the name of your school and your preferred date for the exhibition/workshop.

Visit our website for venues at

[www.justforests.org/schedule](http://www.justforests.org/schedule)

## Contacting Us



Just Forests,  
Dromickbane, Muckross,  
Killarney, Co. Kerry

EMAIL: [tomroche@justforests.org](mailto:tomroche@justforests.org)

WEB: [www.justforests.org](http://www.justforests.org)

FACEBOOK: [facebook.com/justforests](https://facebook.com/justforests) 

Just Forests would like to acknowledge the financial support of:

We are members of and funded by  
**IEN**  
Irish Environmental Network



Roinn Cumarsáide, Gníomhaithe  
ar son na hAeráide & Comhshaoil  
Department of Communications,  
Climate Action & Environment

**SUSTAINABLE  
DEVELOPMENT  
GOALS**

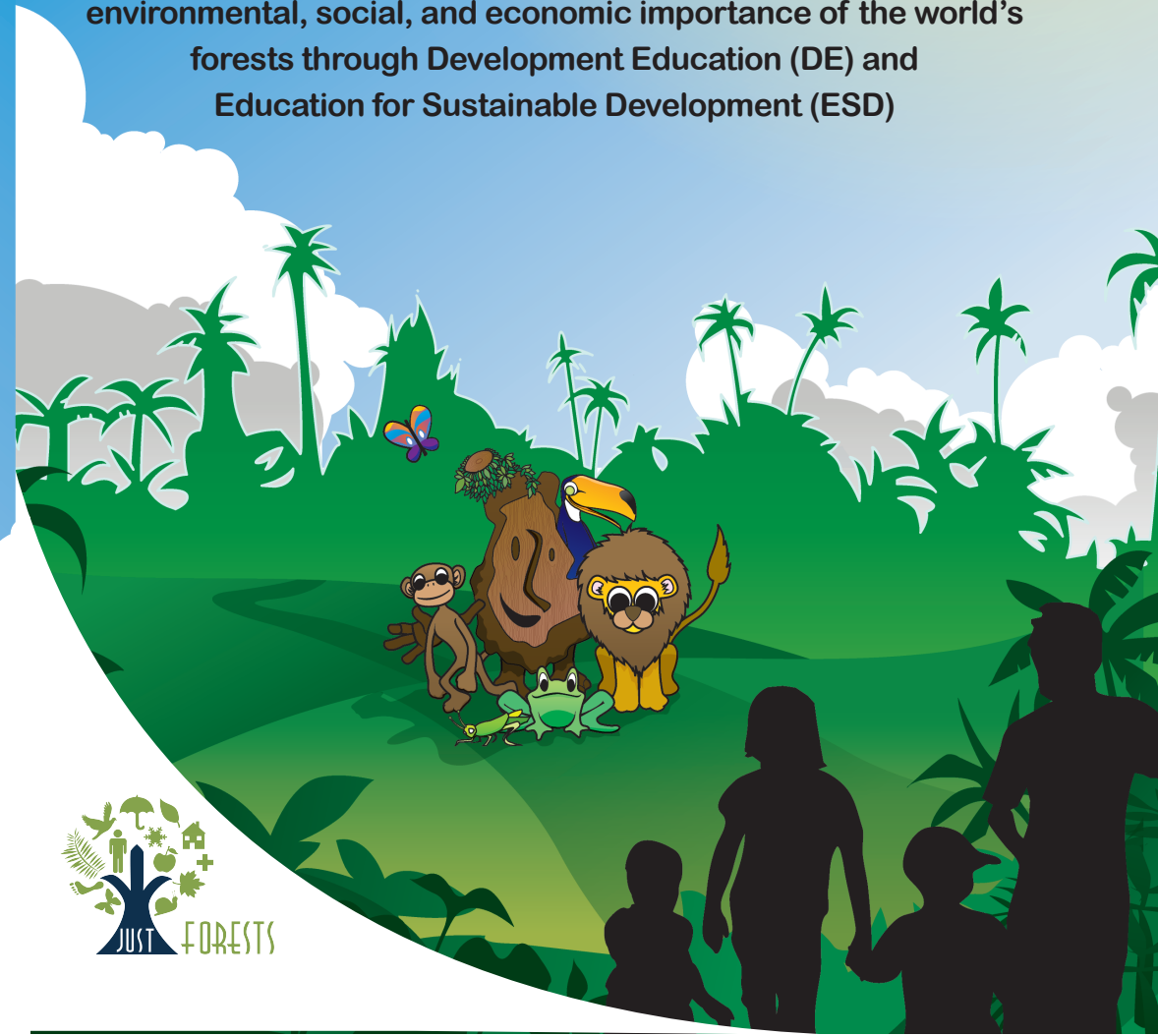
Copyright © 2017 Just Forests

Printed on FSC certified paper

Bringing the Sustainable  
Development Goals (SDGs)  
to life

# Wood of Life

A travelling, hands-on, interactive exhibition on the environmental, social, and economic importance of the world's forests through Development Education (DE) and Education for Sustainable Development (ESD)



This **Wood of Life** exhibition will be an aid in delivering the curriculum to your pupils and will help your pupils to:

**UNDERSTAND** ...the interdependence of people, the environment and the economy and how they are inextricably linked at the Local and Global level

**RECOGNISE** ...how climate change, illegal logging, habitat destruction, resource depletion, bio-diversity decline and extinction of species contributes to poverty

**EXPLORE** ...why good stewardship of the world's finite forest resources is essential to human well being

**Goal 15 of the Sustainable Development Goals:**  
Sustainably manage forests, combat desertification, halt and reverse land degradation, halt biodiversity loss



## EMPOWERING

The Wood of Life exhibition offers an imaginative, practical, hands-on method of education for sustainable development and global citizenship that makes learning enjoyable, exciting and lasting.

The 'development' rationale of the Wood of Life exhibition pivots around a number of key issues and challenges:

### Wood and...

- poverty
- energy/firewood
- livelihoods/construction
- health education
- biodiversity
- sustainability
- climate-change
- art/music
- sports
- conflict/war
- politics
- waste
- economic development/industry

At **Primary / Junior Cycle** level, the Wood of Life addresses objectives in:

- 'Natural and Human Environments' strands in the Geography curriculum
- 'Living Things' strand in the Science curriculum
- 'Environmental Awareness and Care' strand in Science and Geography
- Materials Technology (WOOD)

At **Senior Cycle / Leaving Certificate**, the Wood of Life addresses objectives in:

- Applied Science Groups - Architectural Technology, Agricultural Science
- Social Studies Groups - Art, Geography, History, Music, Religious Education
- Business Studies Group - Economics, Business
- Science Group - Biology
- Transition Year (TY), Leaving Cert Applied (LCA) and Leaving Cert
- Vocational Programme (LCVP)

Activity Sheets will be provided at the venue. Please bring your own pens.